

# PANASUS



## Shenzhen SLS Industrial Co.,Ltd

LCD Manufacturer & Solution Provider

REV: 2021.08

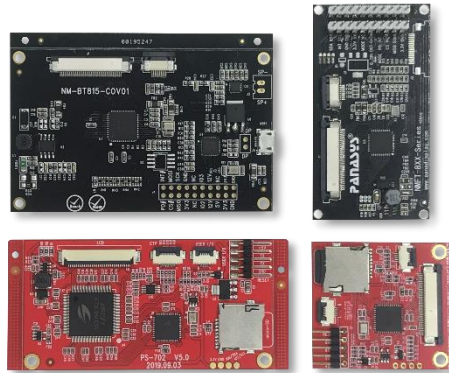
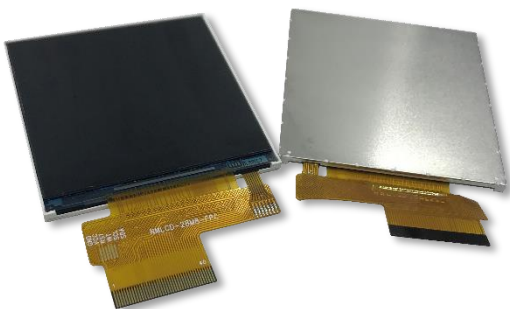
[www.panadisplay.com](http://www.panadisplay.com)

# About US

Shenzhen SLS Industrial Co.,Ltd, established in 2016, is a professional LCD manufacturer and solution provider from China. Our products range includes TFT LCD, embedded graphics display, special strip display and industrial capacitive touch panel. In 2016, we started to design and produce LCD displays and capacitive touch panel, and developed our own brand PANASYS.

In 2017, in order to provide better LCD products and solutions, we started to develop and produce control board and conversion board.

And In 2021, we now have 3 full-auto COG bonding line that can support produce LCD displays from 0.9" to 17.6". Also we have our independent developed intelligent displays series.



At present, we have several mature independent R&D product series providing standard specifications LCD modules and control board. FTDI series, including FT800/801, FT810/811, FT812/813, BT815 and BT816 series control boards, is a series of innovative graphics controller solutions with Embedded Video Engine (EVE) technology provides simultaneous display, audio and touch functionality; PSLCD series, the processor is a configurable custom graphics controller ideally suited for embedded applications. drives with Pixxi28 and Pixxi44 produced by 4D Systems, support 2.4" to 7" LCD displays; MicroChip series, drives with Microchip IC, support Linux system, with Cortex A5 Core, low power, industrial solution, safety and security feature, small Footprint and Die business, etc.

## **Our Products have below typical applications:**

- General purpose low-cost embedded graphics
- Elevator control systems
- Point of sale terminals
- Electronic gauges and meters
- Test and measurement and general-purpose instrumentation
- Industrial control and Robotics
- Automotive system displays
- GPS/Sat-Nav systems
- Medical instruments and applications
- Heart rate and Blood pressure monitors
- Smart Home Automation display panels
- Consumer appliance devices
- Security and Access control panels
- Air conditioner control panels
- Lighting control panels
- Vending machine panels
- Power meter panels
- Gaming equipment
- And much more

# Main Products – TFT LCD



NMLCD-09680160-IPS	
<b>Description</b>	0.96" TFT LCD
<b>Resolution</b>	80*160
<b>LCD Type</b>	Normally Black
<b>Interface</b>	SPI
<b>Driver IC</b>	ST7735S
<b>Luminance</b>	280 cd/m <sup>2</sup>



NMLCD-S013240240-CTP-CLB	
<b>Description</b>	1.3" TFT LCD with 2.5D Capacitive Touch Panel
<b>Resolution</b>	240*240
<b>LCD Type</b>	Normally Black
<b>Interface</b>	SPI
<b>Driver IC</b>	ST7782H2
<b>Luminance</b>	350 cd/m <sup>2</sup>

Part No.	LCD Type	Resolution	Outline Dimension	Active Area	Driver IC	Interface	Luminance	Pin
NMLCD-09680160-IPS	IPS	80*160	13.5*27.95	10.8*21.7	ST7735S	SPI	280	10
NMLCD-S013240240	IPS	240*240	26.86*29.55	23.4*23.4	ST7789H2	SPI	350	16
NMLCD-S013240240-CTP-CLB	IPS	240*240		23.4*23.4	ST7789H2	SPI	310	16
NMLCD-130240240-IPS-SPI	IPS	240*240	26.85*29.55	23.4*23.4	ST7789	SPI		14
NMLCD-144ST	TN	128*128	30*33.03	25.5*26.5	ST7735S	SPI	221	28
NMLCD-144-2NT	TN	128*128	30*33.03	25.5*26.5	ST7735S	SPI		18
NMLCD-144128128	TN	128*128	30*33.03	25.5*26.5	ST7735S	SPI		14
NMLCD-177128160	TN	128*160	33.83*43.42	28.03*35.04	ILI9361V	SPI	350	40
NMLCD-177128160-CTP-CLB	TN	128*160	41.63*52.64	28.03*35.04	ILI9361V	SPI		40
NMLCD-177128160-RTP	TN	128*160	33.83*43.42	28.03*35.04	ILI9361V	SPI		40
NMLCD-20176220-SB-SPI	TN	176*220	51.3*37.68	39.6*31.68	ILI9225G	SPI	500	14
NMLCD-20176220-CTP-CLB-SB-SPI	TN	176*220	44.6*65.8	39.6*31.68	ILI9225G	SPI	450	14
NMLCD-22240320	TN	240*320	40.3*54.36	33.84*45.21	ST7789V	SPI		14
NMLCD-24240320-IPS	IPS	240*320	42.72*60.26	36.72*48.96	ST7789V	MCU-8/16bit/SPI	228	40
NMLCD-24240320-CLB-IPS	IPS	240*320	58.72*78.96	36.72*48.96	ST7789V	MCU-8/16bit/SPI	221	40
NMLCD-24240320-CTP-IPS	IPS	240*320	42.72*60.26	36.72*48.96	ST7789V	MCU-8/16bit/SPI		40
NMLCD-24240320-RTP-IPS	IPS	240*320	42.72*60.26	36.72*48.96	ST7789V	MCU-8/16bit/SPI	182	40
NMLCD-24QA	TN	240*320	42.72*60.26	36.72*48.96	ILI9341V	MCU-8/16bit/SPI	182	40



NMLCD-24240320-CTP-IPS	
<b>Description</b>	2.4" TFT LCD with Capacitive Touch Panel
<b>Resolution</b>	240*320
<b>LCD Type</b>	Normally Black
<b>Interface</b>	MCU-8/16bit / SPI
<b>Driver IC</b>	ILI9341V
<b>Luminance</b>	220 cd/m <sup>2</sup>

NMLCD-28240320-CTP-IPS	
<b>Description</b>	2.8" TFT LCD with Capacitive Touch Panel
<b>Resolution</b>	240*320
<b>LCD Type</b>	Normally Black
<b>Interface</b>	MCU-8/16bit / SPI
<b>Driver IC</b>	ILI9341V
<b>Luminance</b>	221 cd/m <sup>2</sup>

NMLCD-32240320-RTP	
<b>Description</b>	3.2" TFT LCD with Resistive Touch Panel
<b>Resolution</b>	240*320
<b>LCD Type</b>	Normally White
<b>Interface</b>	MCU-8/16bit / SPI
<b>Driver IC</b>	ILI9341V
<b>Luminance</b>	160 cd/m <sup>2</sup>

Part No.	LCD Type	Resolution	Outline Dimension	Active Area	Driver IC	Interface	Luminance	Pin
NMLCD-24M6	IPS	240*320	43.72*59.46	36.72*48.96	ST7789V	MCU-8/16bit/SPI	500	40
NMLCD-28240320-SPI	TN	240*320	50*69.2	43.2*57.6	ILI9341V	MCU-8/16bit/SPI	175	40
NMLCD-28240320-CLB-SPI	TN	240*320	67.2*87.6	43.2*57.6	ILI9341V	MCU-8/16bit/SPI	170	40
NMLCD-28240320-CTP-SPI	TN	240*320	50*69.2	43.2*57.6	ILI9341V	MCU-8/16bit/SPI		40
NMLCD-28240320-RTP-SPI	TN	240*320	50*69.2	43.2*57.6	ILI9341V	MCU-8/16bit/SPI	140	40
NMLCD-28QA	TN	240*320	50*69.2	43.2*57.6	ILI9341V	MCU-8/16bit/SPI	140	40
NMLCD-28240320-IPS	IPS	240*320	50*69.2	43.2*57.6	ILI9341V	MCU-8/16bit	200	40
NMLCD-28240320-RTP-IPS	IPS	240*320	50*69.2	43.2*57.6	ILI9341V	MCU-8/16bit		40
NMLCD-28240320-CTP-IPS	IPS	240*320	50*69.2	43.2*57.6	ILI9341V	MCU-8/16bit		40
NMLCD-28M1	IPS	240*320	50*69.2	43.2*57.6	ST7789V	MCU16-bit/SPI		40
NMLCD-32240320-SPI	TN	240*320	55.04*77.7	48.6*64.8	ILI9341V	MCU-8/16bit/SPI	200	40
NMLCD-32240320-CLB-SPI	TN	240*320	72.6*98.8	48.6*64.8	ILI9341V	MCU-8/16bit/SPI	194	40
NMLCD-32240320-CTP-CLB-SPI	TN	240*320	72.6*98.8	48.6*64.8	ILI9341V	MCU-8/16bit/SPI	190	40
NMLCD-32240320-RTP-SPI	TN	240*320	55.04*77.7	48.6*64.8	ILI9341V	MCU-8/16bit/SPI	160	40
NMLCD-32QA	TN	240*320	55.04*77.7	48.6*64.8	ILI9341V	MCU-8/16bit/SPI	160	40
NMLCD-35320480-IPS	IPS	320*480	54.66*82.94	48.96*73.44	ILI9488	MCU-16bit/SPI	300	40
NMLCD-35320480-RTP-IPS	IPS	320*480	54.66*82.94	48.96*73.44	ILI9488	MCU-16bit/SPI	240	40
NMLCD-35320480-CTP-IPS	IPS	320*480	54.66*82.94	48.96*73.44	ILI9488	MCU-16bit/SPI	255	40
NMLCD-35320480-CTP-CLB-IPS	IPS	320*480	72.1*104.2	48.96*73.44	ILI9488	MCU-16bit/SPI	255	40



NMLCD-43480272-CTP-IPS	
<b>Description</b>	4.3" TFT LCD with Capacitive Touch Panel
<b>Resolution</b>	480*272
<b>LCD Type</b>	Normally Black
<b>Interface</b>	TTL
<b>Driver IC</b>	SC7283
<b>Luminance</b>	475 cd/m <sup>2</sup>



NMLCD-70800480-CTP-CLB	
<b>Description</b>	7" TFT LCD with Capacitive Touch and Cover Lens Bezel
<b>Resolution</b>	800*480
<b>LCD Type</b>	Normally White
<b>Interface</b>	TTL
<b>Driver IC</b>	Source: EK73002, Gate: EK9716
<b>Luminance</b>	475 cd/m <sup>2</sup>

Part No.	LCD Type	Resolution	Outline Dimension	Active Area	Driver IC	Interface	Luminance	Pin
NMLCD-35QA	TN	320*480	54.5*83	48.96*73.44	ILI9488	MCU-8/16bit	182	40
NMLCD-43480272-IPS	IPS	480*272	105.5*67.2	95.04*53.856	SC7283	TTL	500	40
NMLCD-43480272-CLB-IPS	IPS	480*272	123.04*84.46	95.04*53.856	SC7283	TTL	475	40
NMLCD-43480272-CTP-IPS	IPS	480*272	105.5*67.2	95.04*53.856	SC7283	TTL	425	40
NMLCD-43480272-CTP-CLB-IPS	IPS	480*272	123.04*84.46	95.04*53.856	SC7283	TTL	425	40
NMLCD-43480272-RTP-IPS	IPS	480*272	105.5*67.2	95.04*53.856	SC7283	TTL	400	40
NMLCD-43T	IPS	480*272	105.5*67.2	95.04*53.856	SC7283	TTL	400	40
NMLCD-50800480-IPS	IPS	800*480	120.7*75.8	108*64.8	ST7262	TTL	500	40
NMLCD-50800480-CTP-IPS	IPS	800*480	120.7*75.8	108*64.8	ST7262	TTL	475	40
NMLCD-50800480-CTP-CLB-IPS	IPS	800*480	140.7*93.83	108*64.8	ST7262	TTL	475	40
NMLCD-50800480-RTP-IPS	IPS	800*480	120.7*75.8	108*64.8	ST7262	TTL	400	40
NMLCD-50M10	IPS	800*480	120.7*75.8	108*64.8	ST7262	TTL	650	40
NMLCD-70800480	TN	800*480	164.9*100	153.84*85.63	EK73002, EK9716	TTL	500	40
NMLCD-70800480-CTP	TN	800*480	164.9*100	153.84*85.63	EK73002, EK9716	TTL	475	40
NMLCD-70800480-CTP-CLB	TN	800*480	190.08*121.92	153.84*85.63	EK73002, EK9716	TTL	475	40
NMLCD-70800480-RTP	TN	800*480	164.9*100	153.84*85.63	EK73002, EK9716	TTL	400	40
NMLCD-70800480-IPS	IPS	800*480	165.4*104.59	152.4*91.44	HX8249, HX8678	TTL	1000	40
NMLCD-70800480-IPS-LVDS	IPS	800*480	165.4*104.59	152.4*91.44	HX8249, HX8678	LVDS	1000	40
NMLCD-P0701024600-LVDS	TN	1024*600	164.9*100	154.21*85.92		LVDS	800	40
NM070BOEHD30PHX	TN	1024*600	164*100	154.21*85.92		MIPI		30



NMLCD-801024768-CTP-IPS	
<b>Description</b>	8" TFT LCD with Capacitive Touch Panel (Optical Bonding)
<b>Resolution</b>	1024*768
<b>LCD Type</b>	Normally Black
<b>Interface</b>	LVDS
<b>CTP Driver IC</b>	FT5926
<b>Luminance</b>	475 cd/m <sup>2</sup>

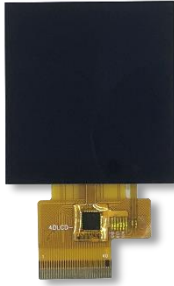


NMLCD-1041024768-CTP-IPS	
<b>Description</b>	10.4" TFT LCD with Capacitive Touch Panel
<b>Resolution</b>	1024*768
<b>LCD Type</b>	Normally Black
<b>Interface</b>	LVDS
<b>CTP Driver IC</b>	ILI2511
<b>Luminance</b>	475 cd/m <sup>2</sup>

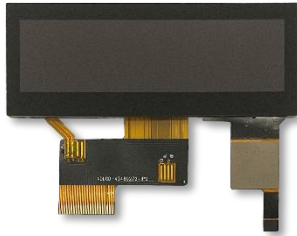
Part No.	LCD Type	Resolution	Outline Dimension	Active Area	Driver IC	Interface	Luminance	Pin
NMLCD-80800480-SB	TN	800*480	192.8*116.9	176.64*99.36		RGB	1000	50
NMLCD-80M5	TN	1024*600	192.8*116.9	176.64*99.36		LVDS	1000	40
NMLCD-801024768-IPS	IPS	1024*768	174*136	162.05*121.54		LVDS	350	40
NMLCD-801024768-CTP-IPS	IPS	1024*768	174*136	162.05*121.54		LVDS	300	4-
NMLCD-801024768-CTP-CLB-IPS	IPS	1024*768	203*161	162.05*121.54		LVDS	300	40
NMLCD-90800480	TN	800*480	210.7*126.4	198*111.696	EK9716, EK73002	TTL	500	40
NMLCD-90800480-CTP	TN	800*480	210.7*126.4	198*111.696	EK9716, EK73002	TTL	475	40
NMLCD-90800480-RTP	TN	800*480	210.7*126.4	198*111.696	EK9716, EK73002	TTL	450	40
NMLCD-1011280800	IPS	1280*800	228.6*148.8	216.96*135.6	HX8245-E, HX8695-B	LVDS	400	45
NMLCD-1011280800-CTP-CLB	IPS	1280*800	253.08*171.72	216.96*135.6	HX8245-E, HX8695-B	LVDS		45
NMLCD-1041024768	IPS	1024*768	228.4*175.4	210.43*157.82		LVDS		30
NMLCD-1041024768-CTP	IPS	1024*768	227*174.8	210.43*157.82		LVDS		30



NMLCD-13240240R-CTP-CLB-IPS	
<b>Description</b>	1.3" Round TFT LCD with Capacitive Touch Panel
<b>Resolution</b>	240*240
<b>LCD Type</b>	Normally Black
<b>Interface</b>	SPI
<b>Driver IC</b>	ST7789H2
<b>Luminance</b>	140 cd/m <sup>2</sup>



NMLCD-25240240-CTP-IPS	
<b>Description</b>	2.5" Square TFT LCD with Capacitive Touch Panel
<b>Resolution</b>	240*240
<b>LCD Type</b>	Normally Black
<b>Interface</b>	MCU
<b>Driver IC</b>	ST7789V
<b>Luminance</b>	175 cd/m <sup>2</sup>



NMLCD-39480128-IPS	
<b>Description</b>	3.9" Strip TFT LCD
<b>Resolution</b>	480*128
<b>LCD Type</b>	Normally Black
<b>Interface</b>	RGB 24bit
<b>Driver IC</b>	SC7283
<b>Luminance</b>	500 cd/m <sup>2</sup>

Part No.	Shape	LCD Type	Resolution	Outline Dimension	Active Area	Driver IC	Interface	Luminance	Pin
NMLCD-13240240R-IPS	Round	IPS	240*240	35.5*38.23	32.4*32.4	ST7789	SPI	150	14
NMLCD-13240240R-CTP-CLB	Round	IPS	240*240	47*47	32.4*32.4	ST7789	SPI	140	14
NMLCD-25240240-IPS	Square	IPS	240*240	47.7*51.35	43.2*43.2	ST7789V	MCU	200	40
NMLCD-25240240-CTP-IPS	Square	IPS	240*240	47.7*51.35	43.2*43.2	ST7789V	MCU	175	40
NMLCD-247480480	Round	IPS	480*480		62.64*62.64	HX8379-C	MIPI	400	35
NMLCD-28M8	Square	IPS	320*320	53.38*57.55	48.96*48.96	ILI9488	MCU16-bit/SPI		40
NMLCD-395480480-IPS	Square	IPS	480*480	74.83*78.98	71.86*70.18	ST7701S	SPI	400	40
NMLCD-395480480-CTP-IPS	Square	IPS	480*480	84*84	71.86*70.18	ST7701S	SPI		40
NMLCD-50480480	Square	TN	480*480	100*110.5	87.3*87.3	EK7718A EK7730B			60
NMLCD-30240400-IPS	Strip	IPS	240*400	43.44*75.3	39.24*65.4	S6D04D1	MCU 8bit		40
NMLCD-39480128-IPS	Strip	IPS	480*128	105.5*40.64	95.04*25.34	SC7283	RGB	400	40
NMLCD-39480128-CTP-IPS	Strip	IPS	480*128	105.5*40.64	95.04*25.34	SC7283	RGB		40
NMLCD-6864001280	Strip	IPS	400*1280	66.6*181	66.22*160.58	ICN9706	MIPI		40
NMLCD-7361280400	Strip	IPS	1280*400	192*70.6	178.56*55.8	ST5821CA ST5084CA	LVDS	700	40
NMLCD-881280320-LVDS	Strip	IPS	1280*320	229.66*67.5	216.96*54.24	EK79202	LVDS	400	40
NMLCD-1031920720	Strip	IPS	1920*720	260.15*110.5	243.64*91.36		LVDS		60
NMLCD-1041024100	Strip	TN	1024*100	274.92*41.5	264.19*25.8		RGB		40
NMLCD-1041024100-CTP	Strip	TN	1024*100	274.92*41.5	264.19*25.8		RGB		40



# Main Products – Control Board



## PIXXI-28 Control Board

- Powered by configurable processor PIXXI-28 produced by 4D Systems.
- Support 1.8", 2.0" and 2.2".
- 32KB of Flash memory for user application code.
- 14KB of SRAM for user variables.
- SD memory card support via a dedicated SPI interface.
- 100% compatible with Workshop4 IDE.



## PIXXI-44 Control Board

- Powered by configurable processor PIXXI-44 produced by 4D Systems.
- Support 2.4", 2.8", 3.2", 3.5" and 4.3".
- 32KB of Flash memory for user application code.
- 128KB of Auxiliary Flash memory for storing data.
- 30KB of SRAM for user variables.
- SD memory card support via a dedicated SPI interface.
- 100% compatible with Workshop4 IDE.



Both **PIXXI series** boards allow various functionalities such as touch detection, microSD memory storage, and GPIO, along with multiple millisecond resolution timers, and UART and I2C communications. They can display full-color images, animations, icons, and video clips, and support all available Windows fonts.

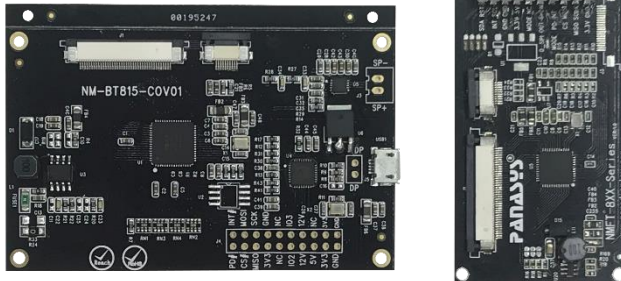
PIXXI series is 100% compatible with the Workshop4 IDE, which provides users with a wealth of options for programming and controlling their system.

The Workshop4 IDE supports multiple development environments for the user, to cater for different user requirements and skill levels.

# Main Products – Control Board

## FTDI Series

Including FT800/801, FT810/811, FT812/813, BT815 and BT816 Control Board, is a series of innovative graphics controller solutions with Embedded Video Engine (EVE) technology provides simultaneous display, audio and touch functionality.



## FT810 Control Board Features

- Advanced Embedded Video Engine (EVE) with high resolution graphics and video playback.
- Functionality includes graphic control, audio control, and touch control interface
- Support SPI and I2C interface
- Support 4-wire resistive touch screen
- Support for LCD display with resolution up to SVGA (800\*600) and formats with data enable (de) mode or VSYNC/HSYNC mode

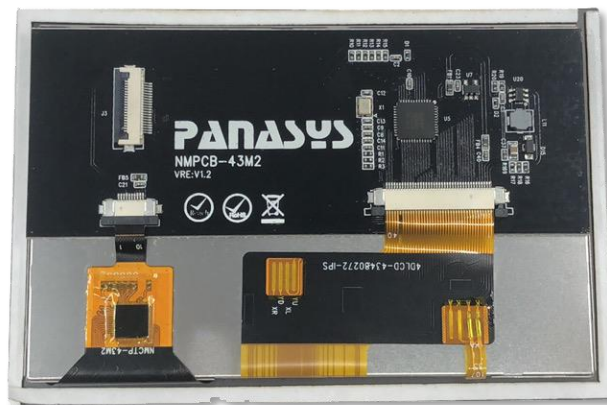
## BT815 Control Board Features

- Advanced Embedded Video Engine (EVE) with high resolution graphics and video playback
- Functionality includes graphic control, audio control, and touch control interface
- Support SPI and I2C interface
- Support capacitive touch screen with up to 5 point touch
- Support for LCD display with resolution up to SVGA (800\*600) and formats with data enable (de) mode or VSYNC/HSYNC mode

# Main Products – Control Board

## FT801 Control Board Features

- The FT801 brings together the functionality and system benefits of EVE together with the increased brightness, interactivity and vividness associated with capacitive touch screen technology
- Support capacitive touch panel
- Functionality includes graphic control, audio control, and touch control interface
- Support SPI interface
- Suitable for WQVGA and QVGA displays



## FT811 Control Board Features

- Advanced Embedded Video Engine (EVE) with high resolution graphics and video playback
- Functionality includes graphic control, audio control, and touch control interface
- Support SPI and I2C interface
- Support capacitive touch screen with up to 5 point touch
- Support for LCD display with resolution up to SVGA (800\*600) and formats with data enable (de) mode or VSYNC/HSYNC mode
- Support landscape and portrait orientations

# Main Products – Control Board

## Microchip Series

This is a motherboard developed based on Microchip SAMA5D27.



- 10.4" Industrial Embedded Systems
- Composed of a 10.4" 1024\*768 IPS Type TFT LCD, a capacitive touch panel, a CNC front cover, a back stand, a back cover and a silicone seal

## Features

- Support Linux System
- Arm Cortex-A5 core
- Memory Architecture
  - ▶ DDR2-SDRAM memory up to 1GB, LPDDR2-SDRAM memory up to 2GB
- System running up to 166 MHz
- Low-Power Modes
  - ▶ Ultra-Low-Power mode with fast wake-up capability
  - ▶ Low-Power Backup mode with 5-Kbyte SRAM and SleepWalking features
- Peripherals
  - ▶ Support TFT LCD with resolution up to 1024\*768 or 1280\*720 (still image)
  - ▶ Two Synchronous Serial Controllers (SSC), two Inter-IC Sound Controllers (I2SC), and one Stereo Class D amplifier (CLASSD)
  - ▶ Two Quad Serial Peripheral Interfaces (QSPI)
  - ▶ Five UARTs
- Security features

# Our Certification



Quality Certified

## 注册证书

### 深圳市云云海实业有限公司

唯一社会信用代码：91440307862002320

注册地址：深圳市宝安区西乡街道社区东沙角云云海科技园4栋4楼  
申报地址：中国广东省惠州市龙川县龙川镇江联社区东沙角云云海科技园4栋4楼  
公司发行的

## 质量管理体系

### 符合ISO 9001:2015的要求

认证范围：中小尺寸液晶模组、工控触摸屏的设计和生

初次发证日期：2009-2019  
复评日期：2009-2019

注册编号：CN3888-QC  
发证日期：2009-2022

Craig J Bates  
President  
TQCSI International (Group) Pty Ltd  
For the TQCSI Certification Approval Panel

Sean Bates  
Accreditation Manager  
TQCSI International Pty Ltd



TQCSI INTERNATIONAL PTY LTD

www.avcb.com.au

www.iaf.com

www.ias-anz.com



Quality Certified

## Certificate of Registration

### Shenzhen SLS Industrial Co., Ltd.

ABN: 91440300544618089

Registered address: 4/F, No.6 Building, Fuzhang Science and Technology Park, Zhuguang Road, Wulian Community, Longgang Street, Longgang District, Shenzhen City  
Audit address: 4/F, No.9 Building, Fuzhang Science and Technology Park, Zhuguang Road, Wulian Community, Longgang Street, Longgang District, Shenzhen City, Guangdong Province, China  
operates a

## Quality Management System

### which complies with the requirements of ISO 9001:2015

The registration covers the design and manufacture of small and medium size LCD modules and industry control touch-screens.

Original Certification: 2009/2019  
Issue/Revised Date: 2009/2022

Registration No: CN3888-QC  
Expiry Date: 2026/2022

Craig J Bates  
President  
TQCSI International (Group) Pty Ltd  
For the TQCSI Certification Approval Panel

Sean Bates  
Accreditation Manager  
TQCSI International Pty Ltd



TQCSI INTERNATIONAL PTY LTD

www.avcb.com.au

www.iaf.com

www.ias-anz.com

**Attestation of Conformity**  
Certification number: VTC-2019091161  
Issue date: Sep. 11, 2019

In accordance with the following Applicable Risk Directives:  
**2011/65/EU and its amendment directive 2015/863/EU**

The test results are traceable to the International or national standards.

**Applicant:** HK NEWMAN TECHNOLOGY CO., LIMITED  
Flat E, 3/F, Po Cheung Building, 148-154 Nam Cheung Street, Kwai Tsing, Hong Kong

**Manufacturer:** Shenzhen SLS Industrial Co., Ltd.  
4th Floor, Block 5, Fuzhang Technology Park, Zhuguang Road, Wulian, Longgang District 518116 Shenzhen, China

**Equipment under test:** Intelligent Display

**Trade Mark:**

**Model number:** NMLCD-FT-70000480-CTP. Additional models refer to Attachment

**Applied Standards and Test Reports:**

Directive 2011/65/EU	EN 62314-1:2019-AT 01/17	VTC-20-000116161
2011/65/EU	EN 62314-2:2019-UC 02/02-7-2 2017	
■ GRS	EN 62314-2:2019-UC 02/02-7-2 2017	

**Note:** The certificate is only valid if the statement and signature is as described. In compliance with the test and control scheme, the test results are traceable to the International or national standards of the manufacturer, after completion of an IEC Declaration of Conformity and compliance with all relevant EMC Directives.

Authorized by: Manager

Tel: 0755-33586229 Fax: 0755-33586220  
http://www.vtc-test.com.cn E-mail: vtc@vtc-test.com

**Attestation of Conformity**  
Certification number: VTC-2019091161  
Issue date: Sep. 11, 2019

**Attachment**

**Model list:**  
NMLCD-FT-43000480, NMLCD-FT-43000480-CTP, NMLCD-FT-43000480-RTP  
NMLCD-FT-50000480, NMLCD-FT-50000480-CTP, NMLCD-FT-50000480-RTP  
NMLCD-FT-70000480, NMLCD-FT-70000480-CTP, NMLCD-FT-70000480-RTP  
NMLCD-FT-80000480, NMLCD-FT-80000480-CTP, NMLCD-FT-80000480-RTP  
NMLCD-FT-90000480-CTP, NMLCD-FT-90000480-RTP, NMLCD-FT-90000480-RTP  
NMLCD-FT-70000000-CTP, NMLCD-FT-70000000-CTP, NMLCD-FT-70000000-CTP  
NMLCD-FT-80000000-CTP, NMLCD-FT-80000000-RTP, NMLCD-FT-701024800  
NMLCD-FT-701024800-CTP, NMLCD-FT-701024800-RTP, NMLCD-FT-801024800  
NMLCD-FT-801024800-CTP, NMLCD-FT-801024800-RTP, NMLCD-FT-801024800  
NMLCD-FT-801024800-CTP, NMLCD-FT-801024800-RTP, NMLCD-FT-1011024800  
NMLCD-FT-1011024800-CTP, NMLCD-FT-1011024800-RTP, NMLCD-FT-1011024800  
NMLCD-FT-1011024800-CTP, NMLCD-FT-1011024800-RTP, NMLCD-FT-1011024800  
NMLCD-FT-1011024800-CTP, NMLCD-FT-1011024800-RTP, NMLCD-FT-1011024800-IPS  
NMLCD-FT-1011024800-IPS-CTP, NMLCD-FT-1011024800-IPS-RTP

Authorized by: Manager

Tel: 0755-33586229 Fax: 0755-33586220  
http://www.vtc-test.com.cn E-mail: vtc@vtc-test.com

**Declaration of Conformity**  
Certification number: VTC-2019091160  
Issue date: Sep. 11, 2019

In accordance with the following Applicable Directives:  
**2014/53/EU**

**Electronic Compatibility**  
The test results are traceable to the International or national standards.

**Applicant:** HK NEWMAN TECHNOLOGY CO., LIMITED  
Flat E, 3/F, Po Cheung Building, 148-154 Nam Cheung Street, Kwai Tsing, Hong Kong

**Manufacturer:** Shenzhen SLS Industrial Co., Ltd.  
4th Floor, Block 5, Fuzhang Technology Park, Zhuguang Road, Wulian, Longgang District 518116 Shenzhen, China

**Equipment under test:** Intelligent Display

**Trade Mark:**

**Model number:** NMLCD-FT-70000480-CTP. Additional models refer to Attachment

**Applied Standards and Test Reports:**

Directive 2014/53/EU	EN 300220-1:2019 EN 300220-2:2019 EN 300220-3:2019	VTC2019091160E1
■ GRS		

**Note:** The certificate is only valid if the statement and signature is as described. In compliance with the test and control scheme, the test results are traceable to the International or national standards of the manufacturer, after completion of an IEC Declaration of Conformity and compliance with all relevant EMC Directives.

Authorized by: Manager

Tel: 0755-33586229 Fax: 0755-33586220  
http://www.vtc-test.com.cn E-mail: vtc@vtc-test.com

**Declaration of Conformity**  
Certification number: VTC-2019091160  
Issue date: Sep. 11, 2019

In accordance with the following Applicable Directives:  
**2014/53/EU**

**Electronic Compatibility**  
The test results are traceable to the International or national standards.

**Applicant:** HK NEWMAN TECHNOLOGY CO., LIMITED  
Flat E, 3/F, Po Cheung Building, 148-154 Nam Cheung Street, Kwai Tsing, Hong Kong

**Manufacturer:** Shenzhen SLS Industrial Co., Ltd.  
4th Floor, Block 5, Fuzhang Technology Park, Zhuguang Road, Wulian, Longgang District 518116 Shenzhen, China

**Equipment under test:** Intelligent Display

**Trade Mark:**

**Model number:** NMLCD-FT-70000480-CTP. Additional models refer to Attachment

**Applied Standards and Test Reports:**

Directive 2014/53/EU	EN 300220-1:2019 EN 300220-2:2019 EN 300220-3:2019	VTC2019091160E1
■ GRS		

**Note:** The certificate is only valid if the statement and signature is as described. In compliance with the test and control scheme, the test results are traceable to the International or national standards of the manufacturer, after completion of an IEC Declaration of Conformity and compliance with all relevant EMC Directives.

Authorized by: Manager

Tel: 0755-33586229 Fax: 0755-33586220  
http://www.vtc-test.com.cn E-mail: vtc@vtc-test.com



# Contact US

- Shenzhen SLS Industrial Co., Ltd
- R&D Center: 328, Kingdom Building, No. 190 Huangge Road, Longgang, Shenzhen, China
- CTP Factory: 410, Block 3, 6th of Ailian Industrial Park, Zhugushi, Wulian, Longgang, Shenzhen
- LCM Factory: 4<sup>th</sup> Floor, No. 11, 3<sup>rd</sup> Lane, Longxing Road, Dakang, Longgang, Shenzhen, China
- Attn: Newman GUO
- Mobile: +86 13570825960
- Phone: 0755-28342847
- Email: [info@panadisplay.com](mailto:info@panadisplay.com)
- Web: [www.panadisplay.com](http://www.panadisplay.com)





PANASUS

深圳市云田海实业有限公司  
Shenzhen SLS Industrial Co.,Ltd

**Shenzhen SLS Industrial Co.,Ltd**

410, Block 3, 6th of Ailian Industrial Park, Zhugushi, Wulian, Longgang, Shenzhen

Phone: 0755-28342847

Fax: 0755-28342847

Email: [info@panadisplay.com](mailto:info@panadisplay.com)